

TAM 11/20/92  
 APPROVED BY/DATE

SAFETY ORGANIZATION(S).

THIS FILTER HAS BEEN FORMALLY RECOGNIZED, CERTIFIED OR APPROVED BY THE LISTED AGENCY. THEREFORE, ALL TEST/REQUIREMENTS SPECIFIED IN THE LATEST REVISION OF THE FOLLOWING AGENCY STANDARDS HAVE BEEN MET.

UL RECOGNIZED  
 CSA CERTIFIED  
 VDE APPROVED

IN PROCESS  
 IN PROCESS  
 IN PROCESS

OPERATING SPECIFICATIONS.

LINE VOLTAGE/CURRENT,  
 10 AMP., 120/250 VAC  
 10 AMP./40°C, 250 VAC  
 50-60Hz  
 LINE FREQUENCY,  
 .25ma at 120V 60 Hz  
 .42ma at 250V 50 Hz  
 MAX. LEAKAGE CURRENT, EACH  
 LINE TO GROUND  
 OPERATING AMBIENT TEMP. RANGE,  
 -10°C TO +40°C @ RATED CURRENT, I<sub>r</sub>

IN AN AMBIENT, T<sub>0</sub>, HIGHER THAN 40°C, THE MAXIMUM OPERATING CURRENT, I<sub>0</sub>, IS AS FOLLOWS.

$$I_0 = I_r \sqrt{\frac{85 - T_0}{45}}$$

RELIABILITY SPECIFICATIONS.

STORAGE TEMPERATURE,  
 -25°C TO +85°C  
 HUMIDITY,  
 21 DAYS @ 40°C 95% RH  
 CURRENT OVERLOAD TEST,  
 6 TIMES RATED CURRENT FOR 8 SECONDS

TEST SPECIFICATIONS.

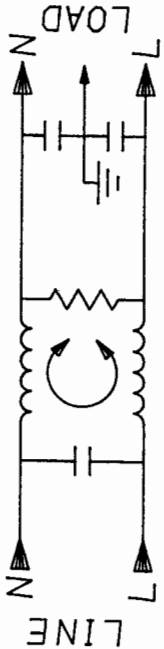
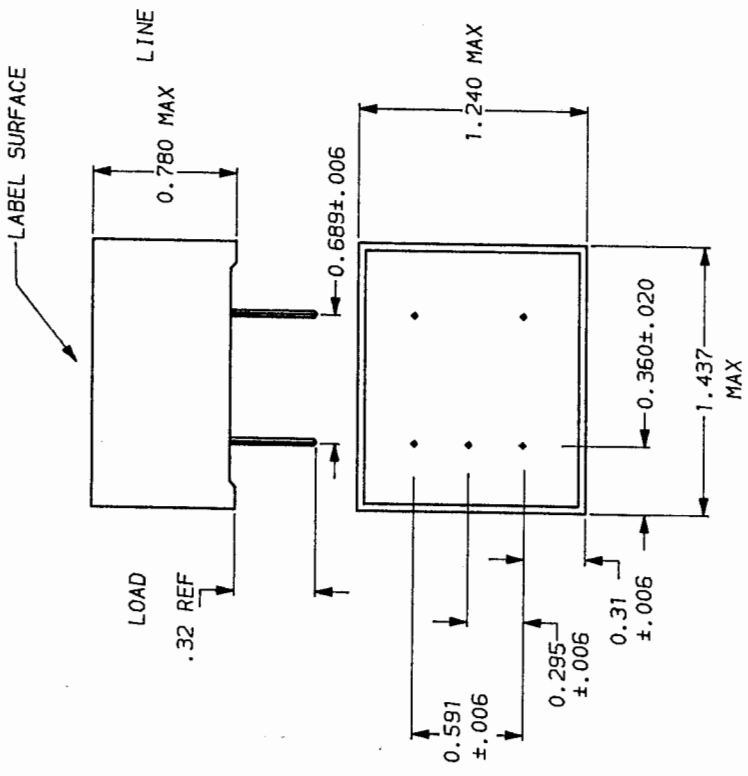
INDUCTANCE,  
 0.35 mH NOMINAL  
 CAPACITANCE, (MEASURED @ 1 KHz, 0.25 VAC MAX., 25°C ±1°C)  
 .003µF ±20%  
 LINE TO GROUND,  
 .02µF ±20%  
 LINE TO LINE,  
 1.5mΩ  
 DISCHARGE RESISTOR,  
 6000 Ω (MIN) AT 100 VDC  
 LINE/GROUND AND LINE/LINE  
 INSULATION RESISTANCE  
 (W/O DISCHARGE RESISTOR)  
 20°C AND 50% RH

RECOMMENDED RECEIVING INSPECTION HIPOT.

LINES TO GROUND,  
 1500 Vdc FOR 1 MINUTE  
 LINE TO LINE,  
 1450 Vdc FOR 1 MINUTE

FILTER APPROVAL.

THE BEST WAY TO SELECT AND QUALIFY A FILTER IS FOR YOUR ENGINEERING TO TEST THE UNIT IN YOUR EQUIPMENT.



50Ω - 50dB (MINIMUM) INSERTION LOSS										
FREQUENCY MHz	1	2	3	4	5	8	10	20	30	
COMMON dB	4	13	15	19	22	26	30	35	35	10
DIFF. dB	1	4	6	9	12	14	14	30	35	42
										35

This document is proprietary to CORCOM INC. and is not to be reproduced nor used for manufacturing purposes except on CORCOM's order or prior written consent.



POWER LINE FILTER

SCALE: NTS 10/21/92  
 DATE: 10/21/92  
 REV. NO. 10EOP  
 DRAWN BY: TAM  
 CHECKED BY: TAM