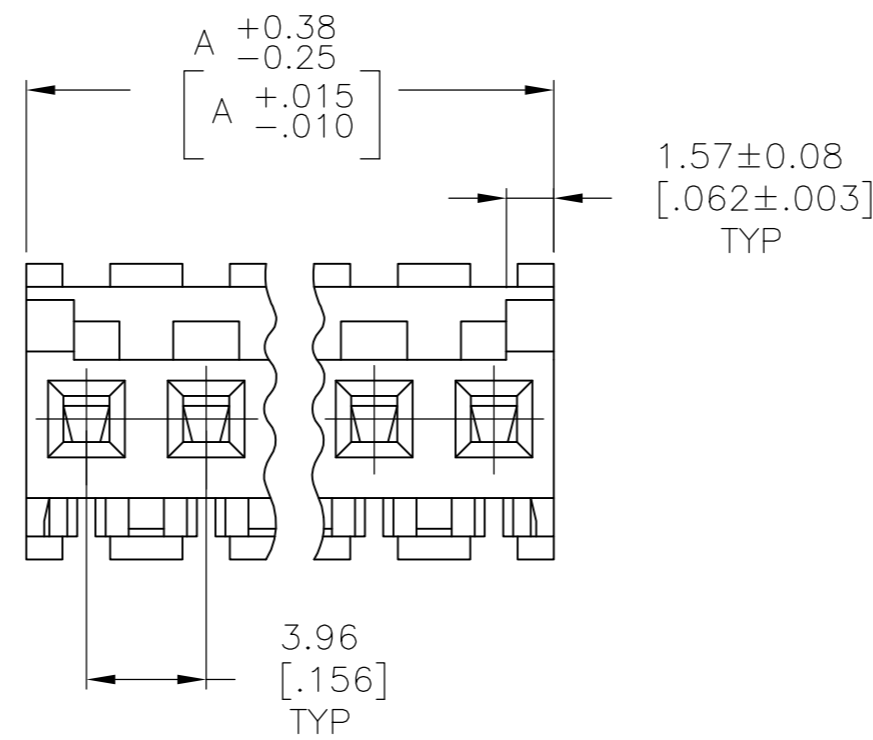
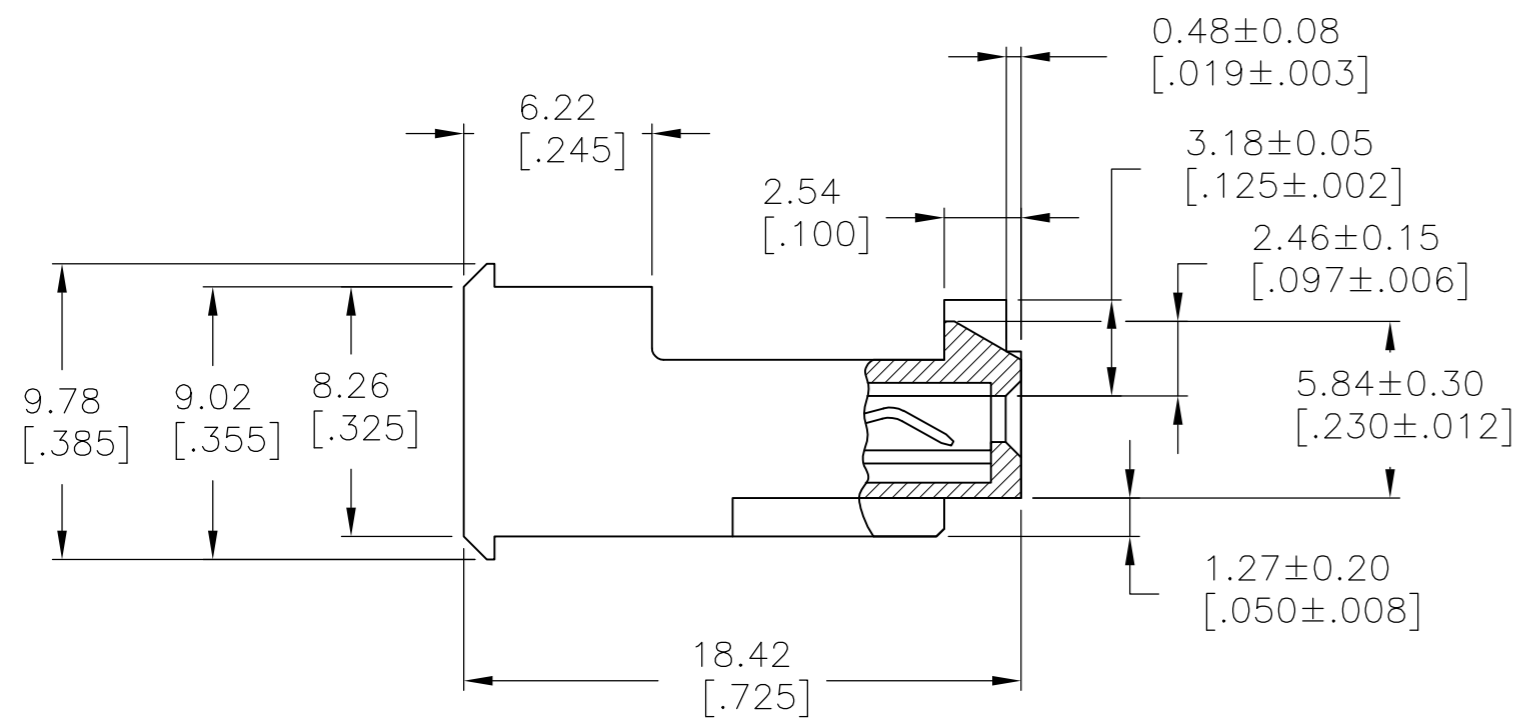
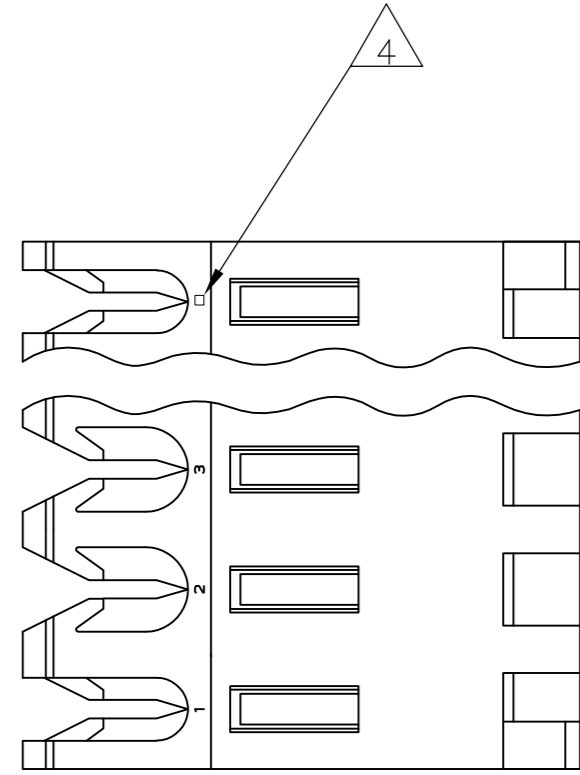


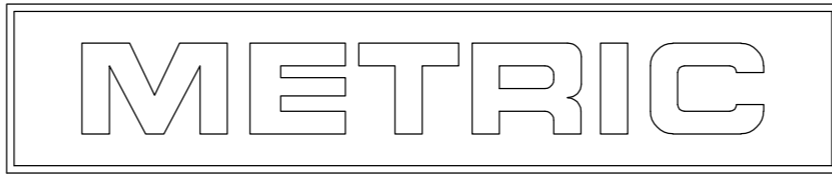
THIS DRAWING IS UNPUBLISHED. RELEASED FOR PUBLICATION
 © COPYRIGHT - By - ALL RIGHTS RESERVED.

LOC	DIST	REVISIONS					
		P	LTR	DESCRIPTION	DATE	DWN	APVD
CM	54	D		REVISED PER ECO-12-007611	30JUL12	KH	SM

- 1 MATERIAL: CONNECTOR - NYLON UL94V-2
CONTACTS - 0.30[.012] THICK COPPER ALLOY
(BRIGHT TIN-LEAD 0.00203[.000080] MIN. THICK FOR CONTACTS 644467-2 THRU 1-644467-4)
(MATTE WHISKER MITIGATED TIN 0.00203[.000080] MIN THICKNESS OVER NICKEL UNDERPLATE FOR 3-644467-2 THRU 4-644467-4).
- 2 CONTACTS ACCEPT 22 AWG WIRE WITH 2.41[.095] MAX INSULATION DIAMETER.
- 3 CONTACTS MUST ACCEPT 1.14±0.03[.045±.001] SQUARE POST AND REMAIN LOCKED IN POSITION.
- 4 IDENTIFICATION NUMBER FOR LAST CIRCUIT MAY NOT APPEAR ON ALL ASSEMBLIES.
- 5 DIMENSIONS IN BRACKETS ARE IN INCHES.
- 6 HOUSING FEATURES ARE: FEED-THRU WITH LOCKING RAMP AND POLARIZING TAB.
- 7 OBSOLETE PARTS: OBSOLETE CIS STREAMLINING PER D.RENAUD/D.SINISI
- 8 RED COLOR STRIPE ON HOUSING (NOT SHOWN) MAY RUN DOWN BETWEEN RIBS



55.47 [2.184]	14	4-644467-4
51.51 [2.028]	13	4-644467-3
47.55 [1.872]	12	4-644467-2
43.59 [1.716]	11	4-644467-1
39.62 [1.560]	10	4-644467-0
35.66 [1.404]	9	3-644467-9
31.70 [1.248]	8	3-644467-8
27.74 [1.092]	7	3-644467-7
23.77 [.936]	6	3-644467-6
19.81 [.780]	5	3-644467-5
15.85 [.624]	4	3-644467-4
11.89 [.468]	3	3-644467-3
7.92 [.312]	2	3-644467-2
7 SUPERSEDED	14	1-644467-4
7 SUPERSEDED	13	1-644467-3
	12	1-644467-2
	11	1-644467-1
	10	1-644467-0
	9	644467-9
7 SUPERSEDED	8	644467-8
7 SUPERSEDED	7	644467-7
	6	644467-6
	5	644467-5
	4	644467-4
	3	644467-3
	2	644467-2
DIM A		NO. OF CIRCUITS
		PART NO



THIS DRAWING IS A CONTROLLED DOCUMENT.

DWN B. LEWIS 12 FEB 91
 CHK R. SWING 12 FEB 91
 APVD D. CLARK 20 FEB 91

DIMENSIONS: mm [INCHES] TOLERANCES UNLESS OTHERWISE SPECIFIED:
 0 PLC ± -
 1 PLC ± -
 2 PLC ± -
 3 PLC ± -
 4 PLC ± -
 ANGLES ± -

MATERIAL 1 FINISH 1

12 FEB 91
 NAME D. CLARK
 PRODUCT SPEC 108-1051
 APPLICATION SPEC 114-1020
 WEIGHT -

TE Connectivity
 MTA 156 CONNECTOR ASSEMBLY,
 22 AWG, STANDARD

SIZE A2 CAGE CODE 00779 DRAWING NO C-644467 RESTRICTED TO -
 SCALE 4:1 SHEET 1 OF 1 REV D

CUSTOMER DRAWING